



KING'S LYNN CONSERVANCY BOARD.

Notice to Mariners No. 12/2018.

East Coast of England - The Wash

Approaches to WASH PORTS.

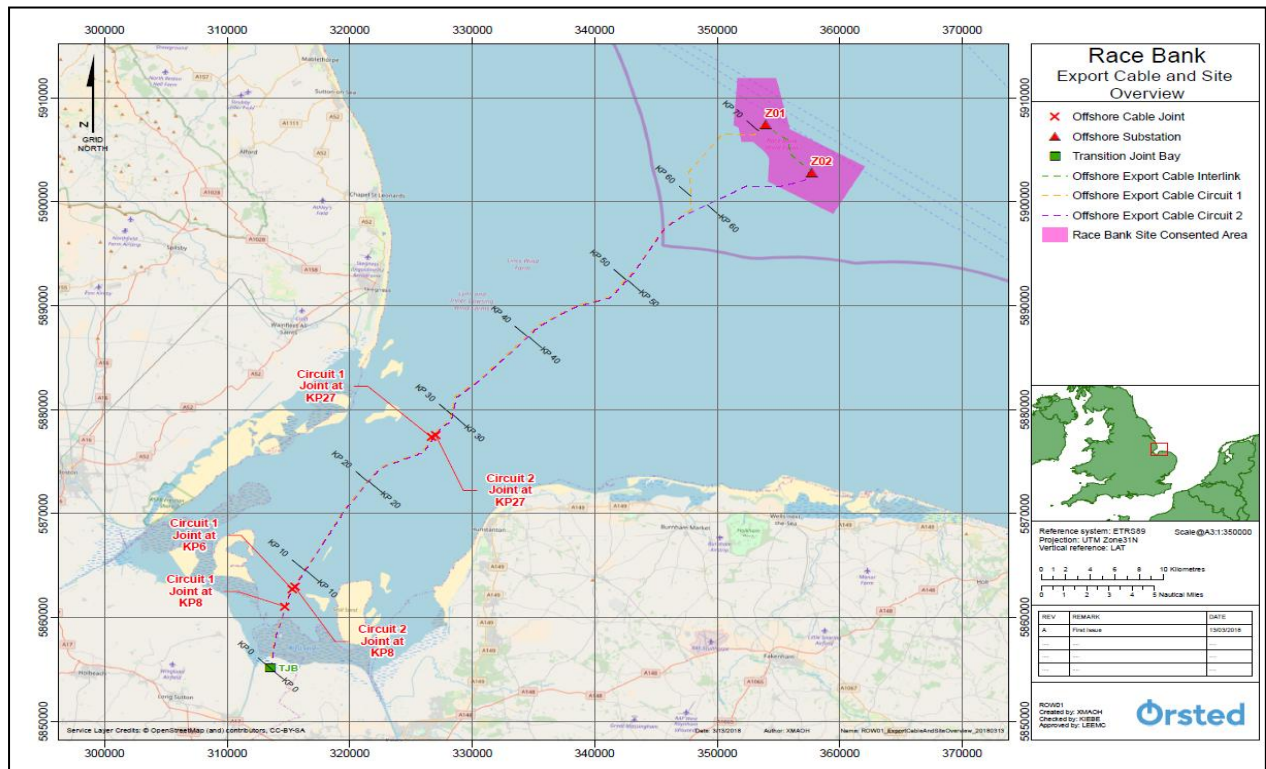
Race Bank WF Export Cable Survey Works.

SURVEY VESSELS - FORYD BAY & BIBBY ATHENA.

Mariners are advised that due to Race Bank Offshore Windfarm construction works Survey Vessels Foryd Bay & Bibby Athena will perform Survey operations between the following positions;

CIRCUIT 1 - 52° 49.362'N, 000° 14.065' E TO 53° 17.215'N, 00 0° 47.270'E

CIRCUIT 2 - 52° 49.365'N, 000° 14.106' E TO 53° 15.153'N, 000° 51.706' E



These operations will commence on approximately 22-03-2018 and be completed on 03-04-2018.

The vessel will be restricted in her ability to manoeuvre whilst carrying out these operations and a wide berth is requested.

When working both vessels will monitor VHF channel 16.

22nd March 2018.

P.J.Jary.

Harbour Master.

King's Lynn,

Norfolk PE30 1LL

www.kingslynnport.co.uk