

**KING'S LYNN CONSERVANCY BOARD.**

Notice to Mariners No. 08/2020.

East Coast of England - Approaches to the Wash.

**Unburied or shallow buried Race Bank Windfarm subsea power cables.**

Charts BA1200, BA108 and Imray Y9



The Race Bank Wind Farm export cable route runs through the KLCB area of jurisdiction from;

52°52.00'N , 000°14.70'E TO 52°58.62'N , 000°20.44'E

AND

52°59.75'N , 000°22.50'E TO 53°01.20'N , 000°25.35'E

As Competent Harbour Authority the KLCB is responsible for managing the safe operation of navigation and other marine activities in the harbour and its approaches. Due to sections of the Race Bank export cable being shallower than the agreed and required depth of burial, at this time we deem any section of cable that has not achieved a burial depth of 1 metre or less to be "Foul Ground" and **warn all marine users to navigate in this area with extreme caution.**

Refer to the charts below for details of sections of cable with burial depth of 1 metre or less.

Marine Charts also carry the Submarine Cables and Pipelines Note which states "**Mariners are advised not to anchor or trawl in the vicinity of submarine cables and pipelines**".

In addition to this the Mariner's Handbook NP100, section 192, **Submarine Pipelines and Cables** should be referred to.

KLCB have established the following navigational buoys that are strategically placed along the cable route to mark the foul ground zone and enhance spatial awareness for mariners;

Z2 buoy, position 52° 54'.050N 00° 16'.115E FI (4)Y 10s.

Z6 buoy, position 52° 57'.520N 00° 19'.165E FI (2) 6s.

Z9 buoy, position 52° 59'.735N 00° 22'.750E FI (2) 6s.

This notice supersedes Notice to Mariners 23 of 2019.

20.02.2020

P.J.Jary

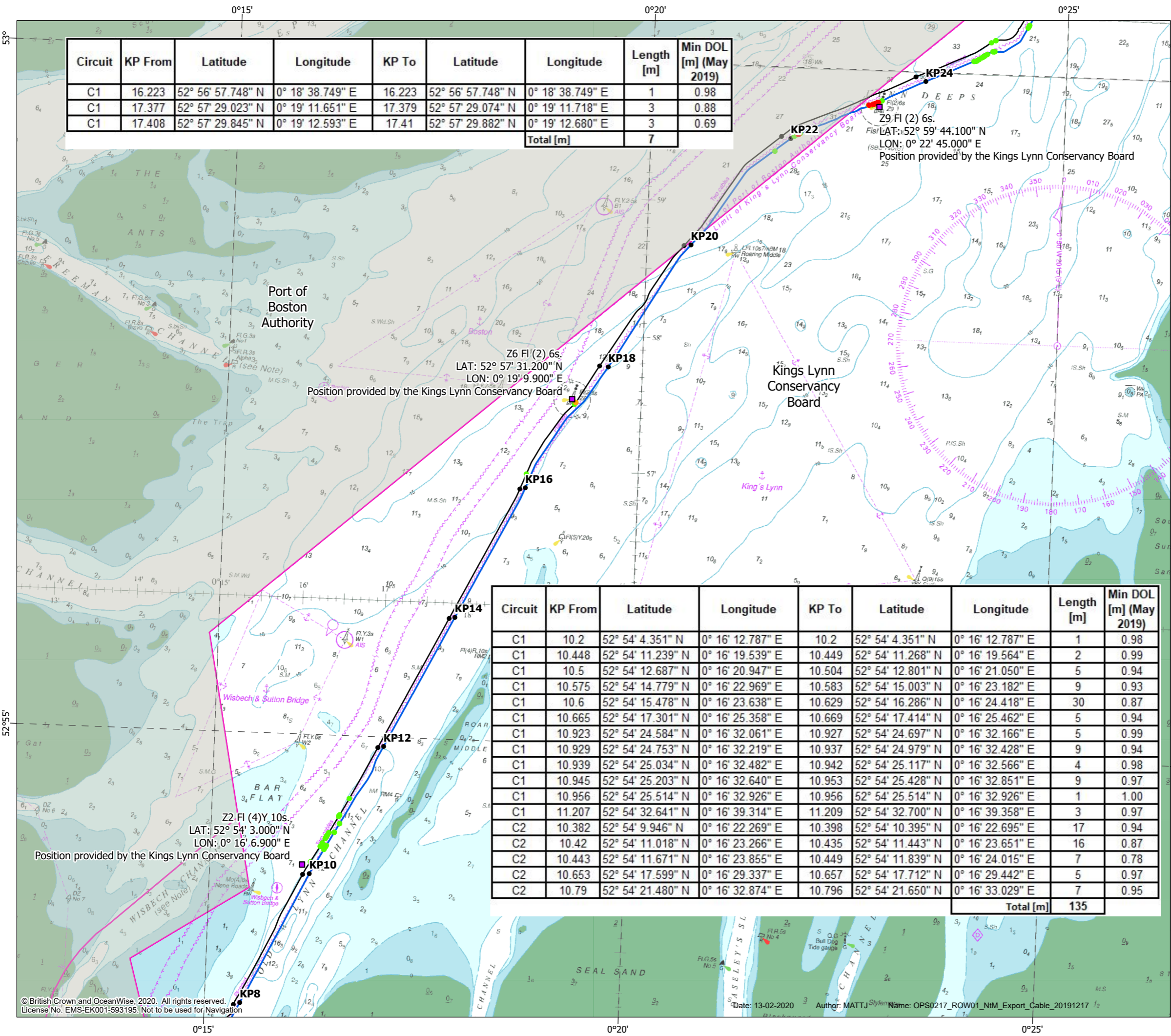
Harbour Master.

Harbour Office,

King's Lynn,

Norfolk PE30 ILL

[www.kingslynnport.co.uk](http://www.kingslynnport.co.uk)



Circuit	KP From	Latitude	Longitude	KP To	Latitude	Longitude	Length [m]	Min DOL [m] (May 2019)
C1	16.223	52° 56' 57.748" N	0° 18' 38.749" E	16.223	52° 56' 57.748" N	0° 18' 38.749" E	1	0.98
C1	17.377	52° 57' 29.023" N	0° 19' 11.651" E	17.379	52° 57' 29.074" N	0° 19' 11.718" E	3	0.88
C1	17.408	52° 57' 29.845" N	0° 19' 12.593" E	17.41	52° 57' 29.882" N	0° 19' 12.680" E	3	0.69
							<b>Total [m]</b>	<b>7</b>

Circuit	KP From	Latitude	Longitude	KP To	Latitude	Longitude	Length [m]	Min DOL [m] (May 2019)
C1	10.2	52° 54' 4.351" N	0° 16' 12.787" E	10.2	52° 54' 4.351" N	0° 16' 12.787" E	1	0.98
C1	10.448	52° 54' 11.239" N	0° 16' 19.539" E	10.449	52° 54' 11.268" N	0° 16' 19.564" E	2	0.99
C1	10.5	52° 54' 12.687" N	0° 16' 20.947" E	10.504	52° 54' 12.801" N	0° 16' 21.050" E	5	0.94
C1	10.575	52° 54' 14.779" N	0° 16' 22.969" E	10.583	52° 54' 15.003" N	0° 16' 23.182" E	9	0.93
C1	10.6	52° 54' 15.478" N	0° 16' 23.638" E	10.629	52° 54' 16.286" N	0° 16' 24.418" E	30	0.87
C1	10.665	52° 54' 17.301" N	0° 16' 25.358" E	10.669	52° 54' 17.414" N	0° 16' 25.462" E	5	0.94
C1	10.923	52° 54' 24.584" N	0° 16' 32.061" E	10.927	52° 54' 24.697" N	0° 16' 32.166" E	5	0.99
C1	10.929	52° 54' 24.753" N	0° 16' 32.219" E	10.937	52° 54' 24.979" N	0° 16' 32.428" E	9	0.94
C1	10.939	52° 54' 25.034" N	0° 16' 32.482" E	10.942	52° 54' 25.117" N	0° 16' 32.566" E	4	0.98
C1	10.945	52° 54' 25.203" N	0° 16' 32.640" E	10.953	52° 54' 25.428" N	0° 16' 32.851" E	9	0.97
C1	10.956	52° 54' 25.514" N	0° 16' 32.926" E	10.956	52° 54' 25.514" N	0° 16' 32.926" E	1	1.00
C1	11.207	52° 54' 32.641" N	0° 16' 39.314" E	11.209	52° 54' 32.700" N	0° 16' 39.358" E	3	0.97
C2	10.382	52° 54' 9.946" N	0° 16' 22.269" E	10.398	52° 54' 10.395" N	0° 16' 22.695" E	17	0.94
C2	10.42	52° 54' 11.018" N	0° 16' 23.266" E	10.435	52° 54' 11.443" N	0° 16' 23.651" E	16	0.87
C2	10.443	52° 54' 11.671" N	0° 16' 23.855" E	10.449	52° 54' 11.839" N	0° 16' 24.015" E	7	0.78
C2	10.653	52° 54' 17.599" N	0° 16' 29.337" E	10.657	52° 54' 17.712" N	0° 16' 29.442" E	5	0.97
C2	10.79	52° 54' 21.480" N	0° 16' 32.874" E	10.796	52° 54' 21.650" N	0° 16' 33.029" E	7	0.95
							<b>Total [m]</b>	<b>135</b>

### Race Bank Offshore Wind Farm

Overview of areas where Depth of Lowering is less than 1m within Kings Lynn Conservancy Board jurisdiction  
Chart 1 of 2

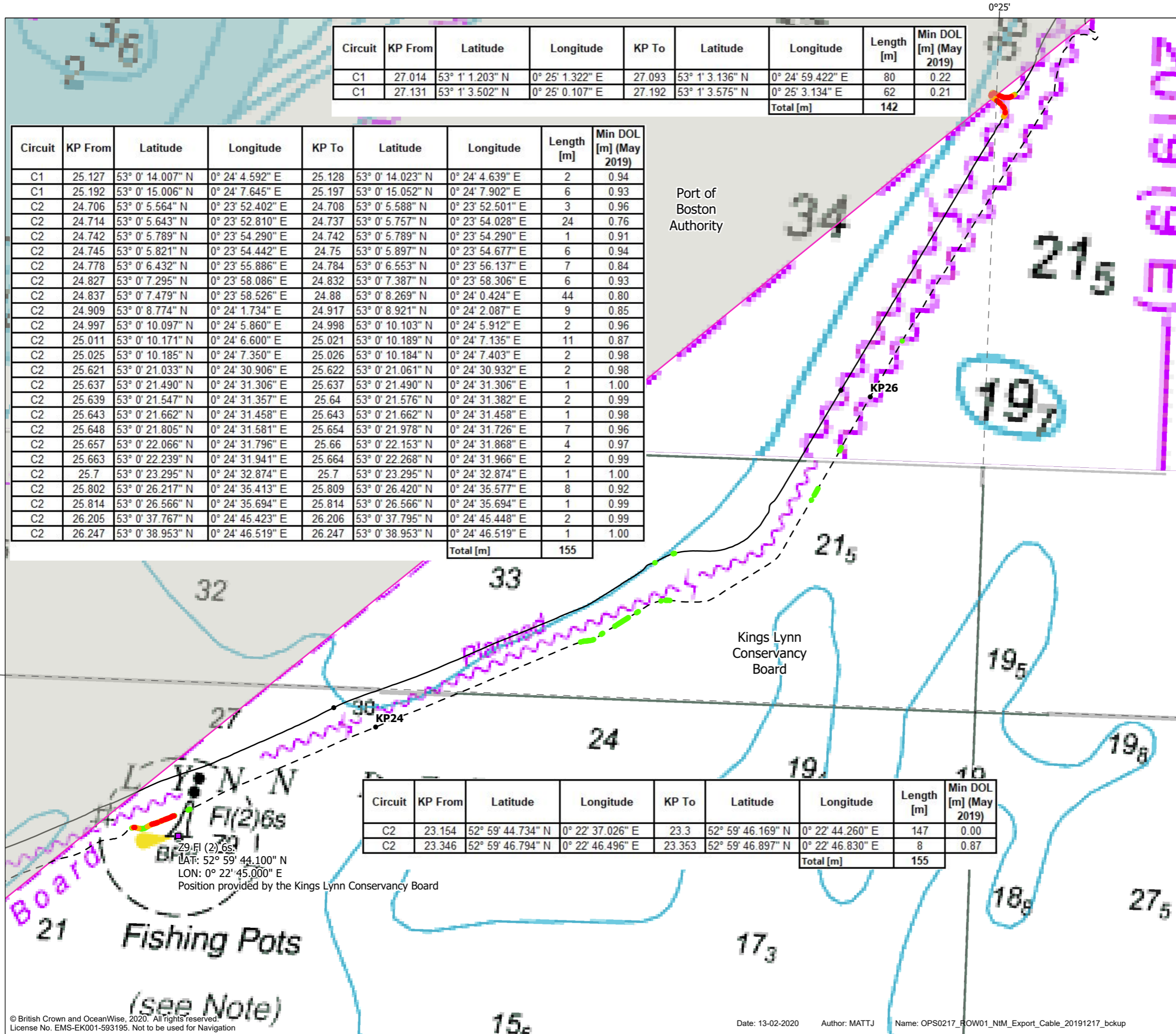
- DOL < 0.5m
- DOL 0.5 to < 0.75m
- DOL 0.75 to < 1.0m
- King's Lynn Conservancy Board Buoys
- KP Points (km)
- ROW01 Export Cable (C1)
- ROW01 Export Cable (C2)
- Port Administration Area



Coordinate system: ETRS 1989 UTM Zone 31N  
Scale@A3: 1:50,000

Doc Name: ROW01\_NIM\_DOL\_KP8\_KP23\_20200203  
Document no: 0217  
Created by: XMAEU  
Checked by: KLABV  
Approved by: DOMBR

© British Crown and OceanWise, 2020. All rights reserved.  
License No. EMS-EK001-593195. Not to be used for Navigation



Circuit	KP From	Latitude	Longitude	KP To	Latitude	Longitude	Length [m]	Min DOL [m] (May 2019)
C1	27.014	53° 1' 1.203" N	0° 25' 1.322" E	27.093	53° 1' 3.136" N	0° 24' 59.422" E	80	0.22
C1	27.131	53° 1' 3.502" N	0° 25' 0.107" E	27.192	53° 1' 3.575" N	0° 25' 3.134" E	62	0.21
							<b>Total [m]</b>	<b>142</b>

Circuit	KP From	Latitude	Longitude	KP To	Latitude	Longitude	Length [m]	Min DOL [m] (May 2019)
C1	25.127	53° 0' 14.007" N	0° 24' 4.592" E	25.128	53° 0' 14.023" N	0° 24' 4.639" E	2	0.94
C1	25.192	53° 0' 15.006" N	0° 24' 7.645" E	25.197	53° 0' 15.052" N	0° 24' 7.902" E	6	0.93
C2	24.706	53° 0' 5.564" N	0° 23' 52.402" E	24.708	53° 0' 5.588" N	0° 23' 52.501" E	3	0.96
C2	24.714	53° 0' 5.643" N	0° 23' 52.810" E	24.737	53° 0' 5.757" N	0° 23' 54.028" E	24	0.76
C2	24.742	53° 0' 5.789" N	0° 23' 54.290" E	24.742	53° 0' 5.789" N	0° 23' 54.290" E	1	0.91
C2	24.745	53° 0' 5.821" N	0° 23' 54.442" E	24.75	53° 0' 5.897" N	0° 23' 54.677" E	6	0.94
C2	24.778	53° 0' 6.432" N	0° 23' 55.886" E	24.784	53° 0' 6.553" N	0° 23' 56.137" E	7	0.84
C2	24.827	53° 0' 7.295" N	0° 23' 58.086" E	24.832	53° 0' 7.387" N	0° 23' 58.306" E	6	0.93
C2	24.837	53° 0' 7.479" N	0° 23' 58.526" E	24.88	53° 0' 8.269" N	0° 24' 0.424" E	44	0.80
C2	24.909	53° 0' 8.774" N	0° 24' 1.734" E	24.917	53° 0' 8.921" N	0° 24' 2.087" E	9	0.85
C2	24.997	53° 0' 10.097" N	0° 24' 5.860" E	24.998	53° 0' 10.103" N	0° 24' 5.912" E	2	0.96
C2	25.011	53° 0' 10.171" N	0° 24' 6.600" E	25.021	53° 0' 10.189" N	0° 24' 7.135" E	11	0.87
C2	25.025	53° 0' 10.185" N	0° 24' 7.350" E	25.026	53° 0' 10.184" N	0° 24' 7.403" E	2	0.98
C2	25.621	53° 0' 21.033" N	0° 24' 30.906" E	25.622	53° 0' 21.061" N	0° 24' 30.932" E	2	0.98
C2	25.637	53° 0' 21.490" N	0° 24' 31.306" E	25.637	53° 0' 21.490" N	0° 24' 31.306" E	1	1.00
C2	25.639	53° 0' 21.547" N	0° 24' 31.357" E	25.64	53° 0' 21.576" N	0° 24' 31.382" E	2	0.99
C2	25.643	53° 0' 21.662" N	0° 24' 31.458" E	25.643	53° 0' 21.662" N	0° 24' 31.458" E	1	0.98
C2	25.648	53° 0' 21.805" N	0° 24' 31.581" E	25.654	53° 0' 21.978" N	0° 24' 31.726" E	7	0.96
C2	25.657	53° 0' 22.066" N	0° 24' 31.796" E	25.66	53° 0' 22.153" N	0° 24' 31.868" E	4	0.97
C2	25.663	53° 0' 22.239" N	0° 24' 31.941" E	25.664	53° 0' 22.268" N	0° 24' 31.966" E	2	0.99
C2	25.7	53° 0' 23.295" N	0° 24' 32.874" E	25.7	53° 0' 23.295" N	0° 24' 32.874" E	1	1.00
C2	25.802	53° 0' 26.217" N	0° 24' 35.413" E	25.809	53° 0' 26.420" N	0° 24' 35.577" E	8	0.92
C2	25.814	53° 0' 26.566" N	0° 24' 35.694" E	25.814	53° 0' 26.566" N	0° 24' 35.694" E	1	0.99
C2	26.205	53° 0' 37.767" N	0° 24' 45.423" E	26.206	53° 0' 37.795" N	0° 24' 45.448" E	2	0.99
C2	26.247	53° 0' 38.953" N	0° 24' 46.519" E	26.247	53° 0' 38.953" N	0° 24' 46.519" E	1	1.00
							<b>Total [m]</b>	<b>155</b>

Circuit	KP From	Latitude	Longitude	KP To	Latitude	Longitude	Length [m]	Min DOL [m] (May 2019)
C2	23.154	52° 59' 44.734" N	0° 22' 37.026" E	23.3	52° 59' 46.169" N	0° 22' 44.260" E	147	0.00
C2	23.346	52° 59' 46.794" N	0° 22' 46.496" E	23.353	52° 59' 46.897" N	0° 22' 46.830" E	8	0.87
							<b>Total [m]</b>	<b>155</b>

29 Fl (2) 6s  
 BR Fl (2) 6s  
 LAT: 52° 59' 44.100" N  
 LON: 0° 22' 45.000" E  
 Position provided by the Kings Lynn Conservancy Board

### Race Bank Offshore Wind Farm

Overview of areas where Depth of Lowering is less than 1m within Kings Lynn Conservancy Board jurisdiction  
Chart 2 of 2

- DOL < 0.5m
- DOL 0.5 to < 0.75m
- DOL 0.75 to < 1.0m
- King's Lynn Conservancy Board Buoys
- KP Points (km)
- ROW01 Export Cable (C1)
- - - ROW01 Export Cable (C2)
- Port Administration Area



Coordinate system: ETRS 1989 UTM Zone 31N  
 Scale@A3: 1:12.000  
 0,2 0,1 0 0,2 0,4 Kilometres  
 0 0,05 0,1 0,2 0,3 Nautical Miles

Doc Name: ROW01\_NIM\_DOL\_KP23\_KP27\_20200203  
 Document no: 0217  
 Created by: XMAEU  
 Checked by: MATTJ  
 Approved by: DOMBR

