

KING'S LYNN CONSERVANCY BOARD.



Notice to Mariners No. 6a /2022

East Coast of England - The Wash

Approaches to King's Lynn : Bulldog Channel

Amendments to buoyage / Change of Approach Channel.

Mariners are advised that due to recent changes in the profile of the approach channels to King's Lynn on Monday 7th March 2022, the main approach channel was **moved to the Bulldog Channel.**

The Daseley Channel is now un-buoyed and **not suitable for navigation** to Kings Lynn. All existing channel buoys from No.13 light buoy to the south have not be affected.

A new chart extract and lists of nav aids can be downloaded from our website or available from the Harbour Office during working hours.

The as laid new buoy positions and characters are as follows:

(please note that the position of No.4 light buoy differs from that in NTM 6/2022 issued 4th March 2022)

No1: Yellow Pillar by.	FI Y 3s	52° 56'.000N.	00° 23'.000E
Pilot Boarding Position: close east of No.1 light buoy.			
No.2: Port Hand by.	FI (2) R 6s	52° 55'.350N.	00° 23'.750E
No.3: Stbd hand by.	FI (2) G 6s	52° 55'.350N.	00° 23'.260E
No.4: Port Hand by.	FI R 5s	52° 54'.110N.	00° 23'.350E
No.5: Stbd hand by.	FI G 5s	52° 54'.150N.	00° 23'.000E
No.7: Stbd hand by.	FI (2) G 6s	52° 53'.185N.	00° 22'.610E
No.8: Port Hand by.	FI (2) R 6s	52° 53'.185N.	00° 22'.775E
No.10: Port Hand by.	FI R 5s	52° 52'.530N.	00° 22'.480E
No.11: Stbd hand by.	FI G 3s	52° 52'.600N.	00° 22'.360E
No.12: Port Hand by.	FI (2) R 4s	52° 52'.135N.	00° 22'.000E

A chart extract showing the new channel and buoyage is attached to this NtM

NTM 06/2022 is now cancelled

8th March 2022

P M Bailey

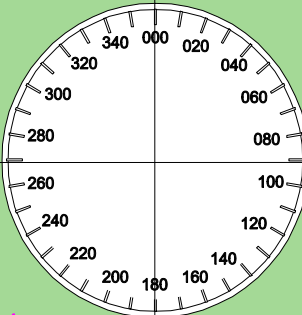
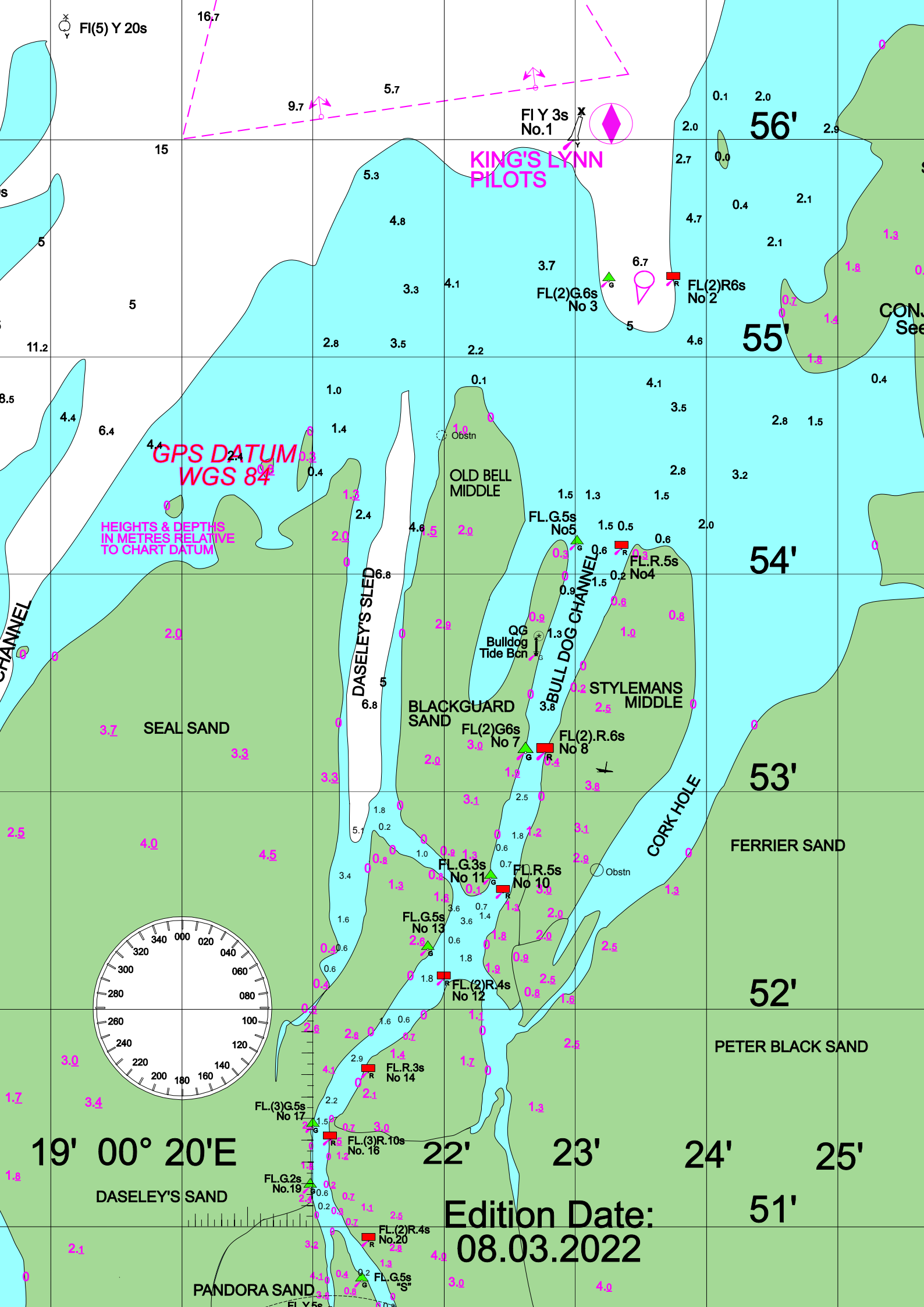
Deputy Harbour Master.

Harbour Office,

King's Lynn,

Norfolk PE30 1LL

www.kingslynnport.co.uk



Edition Date:
08.03.2022